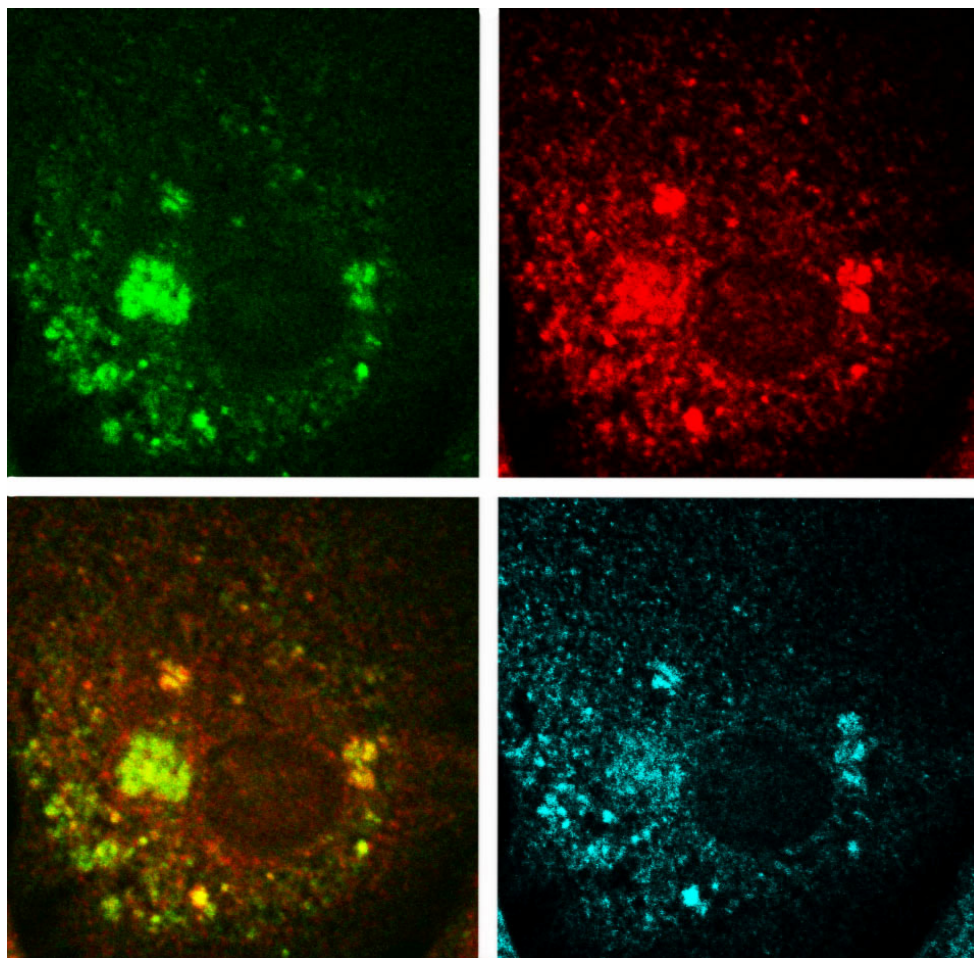


Pentosan polysulfate can cause epigenetic effects in synovial fibroblast cells during cell division

Confocal fluorescent microscopy of a synovial fibroblast cell

Cell culture, slide, staining and photography by Biopharm Australia scientists



PPS is trafficked into the pericentriolar compartment

PPS (green) accumulates in cytoplasmic foci where it is intimately associated with e-tubulin (red). This colocalization is seen as yellow/orange in the overlay image (bottom left). E-tubulin resides in the pericentriolar matrix which is found adjacent to the nucleus and forms the mitotic spindle. E-tubulin provides a channel for PPS to contact DNA during mitosis. At bottom right c-Jun (blue), another DNA-binding protein that controls gene expression is seen. c-Jun also colocalizes with PPS (overlay not shown).

World leading research by Biopharm Australia



www.arthritis.au.com